

# Make your pool deck stylish

LUXAP00L® Poolside & Paving is a decorative, non-slip (P5 rated) coating that is easy to apply and provides a durable surface, suitable for most pebble, concrete and paved pool surrounds.

A range of non-slip textures are achievable through simple variations during application.

LUXAP00L® Poolside & Paving can be used on:

- Pool surrounds
- Decks and patios
- Balconies
- Boat decks, pontoons
- Wharf and landing dock surfaces
- Steps, stairs and walkways

LUXAP00L® Poolside & Paving is available in a range of stylish colours and may be used on pebblecrete, sandstone, cement render, masonry, fibre-cement sheet and unglazed tiles.

To ensure adhesion to these surfaces, inclusion of a specialty primer is mandatory as the first coat of a systems approach. For enhanced stain resistance and to allow easier maintenance, a clear protective finish is available.



202009v1n



**Luxa  
pool**  
Poolside & Paving

For more information contact

**Pool Paint Online**

Unit 2 / 25 Jersey Road, Bayswater VIC 3153 AUSTRALIA

tel: (03) 9720 8777

fax: +61 3 9720 8540

email: [sales@poolpaintonline.com.au](mailto:sales@poolpaintonline.com.au)

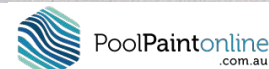
web: [poolpaintonline.com.au](http://poolpaintonline.com.au)

LUXAP00L® is a registered trade mark

© COLORMAKER INDUSTRIES 2020



**Decorative  
Durable  
Non-slip  
Poolside & Paving**







# Available in a range\* of stylish colours

## Typical application for pool coping or surrounds

### Preparation

Surfaces must be clean, dry and stable.

### You will need

#### Priming options:

- **ACRYLMERIC® WB Epoxy Primer Membrane** 2-4 m<sup>2</sup>/L for fibreglass, damp surfaces or new cement, or
- **ACRYLMERIC® Superseal Primer** 8-10 m<sup>2</sup>/L for most masonry surfaces

#### Fill coat and top coat:

- **LUXAPOOL® Poolside & Paving** 2 m<sup>2</sup>/L

#### Protective clear coating:

- **UNICRYL® HD Clear Glaze** approx. 8 m<sup>2</sup>/L

### Application

#### Priming all surfaces:

- 1 coat **ACRYLMERIC® Superseal Primer** or **ACRYLMERIC® WB Epoxy Primer Membrane** by brush or roller.  
Sand fibreglass first, then prime.

#### Fill coat and top coat for Concrete Surfaces:

- 2 coats of **LUXAPOOL® Poolside & Paving**

The texture of the final coat can be customised using various rollers. Contact Colormaker Industries for advice.

#### Fill coat and top coat for Pebblecrete or Pavers:

- 2 coats of **LUXAPOOL® Poolside & Paving**

The first coat of **LUXAPOOL® Poolside & Paving** should be applied using a spreader blade, trowel or squeegee. The second coat can be applied the same way or by roller.

#### Fill coat and top coat for Fibreglass:

- 2 coats of **LUXAPOOL® Poolside & Paving**

Both first and second coats can be applied by short nap or consolidation roller for a smoother finish.

### Drying times (at 25°C and 50% Relative Humidity)

ACRYLMERIC® WB Epoxy Primer Membrane	5 hrs
ACRYLMERIC® Superseal Primer	4 hrs
LUXAPOOL® Poolside & Paving base coat	8 hrs
LUXAPOOL® Poolside & Paving top coat	24 hrs for light traffic 3-7 days for full cure
UNICRYL® HD Clear Glaze†	3-7 days for full cure

†Allow LUXAPOOL® Poolside & Paving top coat to dry completely before applying UNICRYL® HD Clear Glaze

Allow a minimum of 3-7 days drying time for the top coat to fully cure before placing outdoor furniture on the coated surface.

**NOTE:** Do not apply **LUXAPOOL® Poolside & Paving** or **UNICRYL® HD Clear Glaze** below 15°C, or when rain is forecast within 24 hours of application. For application during winter months, contact Colormaker Industries for advice.

### Innovation

An innovative concept in decoration and maintenance for poolside and exterior surfaces.

✓ Water-based	✓ Ready to use from container
✓ Environmentally friendly	✓ UV resistant, tough & durable
✓ Low VOC	✓ Excellent adhesion to a wide range of exterior surfaces
✓ P5 Non-slip rated	

## Colormaker Industries

*Quality coatings through research and innovation*

For over 60 years, a commitment to developing industry leading products through extensive research has positioned Colormaker Industries as a leader in the coatings industry.

100% of Colormaker's electricity comes from renewable sources. Our solar array generates twice as much electricity as needed—enough to power 20 homes and save over 150 tons of greenhouse gases per year.

Colormaker Industries is Australian owned.



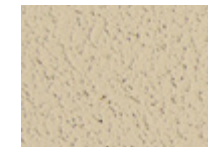
Classic Cream™



Surfmist®



Arctic White



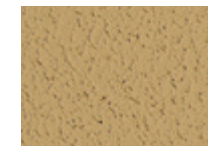
Beachsand



Merino AS Y56



Shale Grey™



Arnhem



Dune®



Windspray®



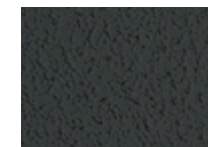
Winter Brown



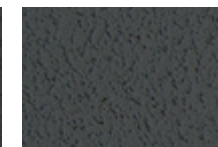
Basalt®



Platinum Grey



Night Sky®



Monument®



Deep Ocean®

Colours shown are as close as printing processes allow.

COLORBOND® Steel colour names are registered trade marks of BlueScope Steel Ltd.

\*Other colours available by special arrangement. Premium charges may apply.



**PoolPaintonline**  
.com.au